

Golden Plains Wind Farm

Development Plans V39-03, 1 December 2020



Turbine ID	Easting	Northing
WTG001	728572.709	5804227.785
WTG002	729139.896	5804624.318
WTG003	729152	5803804.999
WTG004	729142.25	5805578.089
WTG005	729594.423	5805021.666
WTG006	729668.295	5804423.254
WTG007	729652	5803732.001
WTG008	729618.194	5806017.784
WTG009	729911.277	5805437.51
WTG010	730055.001	5802579.001
WTG011	729925.466	5806481.524
WTG012	730447.603	5806214.591
WTG013	730505.507	5803989.473
WTG014	730077.19	5801900.94
WTG015	730359.258	5804681.174
WTG016	730502.499	5805214.65
WTG017	730548.426	5807366.056
WTG018	730227	5806921.109
WTG019	730949.722	5803214.312
WTG020	731232.93	5803689.287
WTG021	730943.752	5801749.707
WTG022	730735.238	5802458.199
WTG023	731107.089	5805953.671
WTG024	731048.85	5804994.34
WTG025	731283.638	5800680.974
WTG026	731276.186	5800095.426
WTG027	731265.402	5806449.946
WTG028	730292.097	5803484.821
WTG029	731430.629	5801260.286
WTG030	731421.061	5807219.542
WTG031	731437.204	5799550.885
WTG032	731538.408	5802014.728
WTG033	731523.171	5805138.802
WTG034	731716.679	5800351.951
WTG035	731872.492	5799816.007
WTG036	731313.758	5804302.261
WTG037	731983.555	5798750.657
WTG038	732105.249	5799295.357
WTG039	732106.966	5803860.763
WTG040	732173.378	5801533.375
WTG041	732409.19	5806935.245
WTG042	732159.095	5805034.814
WTG043	732276.598	5806250.281

Turbine ID	Easting	Northing
WTG044	732196.628	5804373.723
WTG045	732500.36	5798741.088
WTG046	732604.813	5799354.094
WTG047	733749.04	5801234.572
WTG048	732691.122	5799866.773
WTG049	732714.597	5805712.305
WTG050	732780.001	5806457.983
WTG051	732883.894	5805070.604
WTG052	732905.105	5804117.56
WTG053	733118.998	5799424
WTG054	733164.97	5806059.162
WTG056	733331.009	5800134.358
WTG057	733369.404	5804437.726
WTG058	733407.416	5798787.198
WTG059	733574.087	5800650.876
WTG060	733482.239	5805111.962
WTG061	733670.481	5805626.293
WTG062	734178.393	5801577.908
WTG064	734004.577	5804301.436
WTG065	734010.997	5799324.001
WTG066	734098.462	5803604.682
WTG067	734232.349	5797856.017
WTG068	734604.878	5801928.359
WTG069	734357.001	5800123.001
WTG070	736324.139	5803127.477
WTG071	734478.001	5800795.999
WTG072	734568.744	5799380.293
WTG073	734578.611	5797024.192
WTG074	734600.953	5803405.652
WTG075	734751.935	5797608.928
WTG076	735064.242	5797150.526
WTG077	735083.053	5800173.409
WTG078	735150.596	5803475.307
WTG079	735366.866	5801566.327
WTG080	735427.901	5800988.6
WTG081	735570.994	5797531.349
WTG082	735612.462	5803684.226
WTG083	735770.91	5799337.222
WTG084	735791.816	5802171.194
WTG085	735794.914	5800003.694
WTG086	735900.281	5798769.292
WTG087	735910.795	5797893.116
WTG088	735912.69	5802744.883

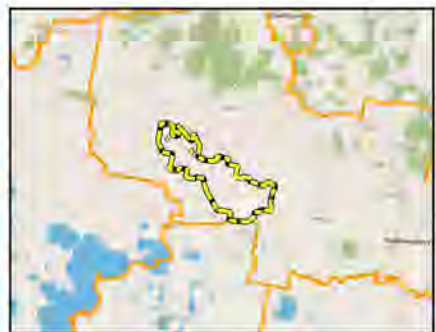
Turbine ID	Easting	Northing
WTG089	736156	5801511.999
WTG090	736274.999	5797142
WTG091	736303.294	5799810.574
WTG092	736952	5798397
WTG093	736703.437	5799032.719
WTG094	736795.748	5799966.553
WTG095	736603	5797799
WTG096	737421.102	5796918.458
WTG097	737531.149	5799091.539
WTG098	737585	5798433.999
WTG099	737620.809	5799682.466
WTG100	737811.723	5797380.054
WTG101	738035.191	5796813.337
WTG102	738181.372	5797741.448
WTG103	738178.847	5798983.42
WTG104	738345.006	5796340.822
WTG105	738480.471	5798374.373
WTG106	738571.031	5796958.42
WTG107	738606.722	5799257.316
WTG108	738928.269	5795372.855
WTG109	739018.471	5794480.891
WTG110	739249.924	5799325.232
WTG111	739172.84	5795948.113
WTG112	739196.807	5798744.758
WTG113	739627.548	5794892.738
WTG114	739777.473	5799925.366
WTG115	739872.766	5796900.966
WTG116	740004.325	5799324.533
WTG117	740015.437	5794427.538
WTG118	740093.885	5798140.035
WTG119	740093.271	5797433.333
WTG120	740249.721	5800101.823
WTG121	740323.3	5798812.3
WTG122	740703.101	5800556.518
WTG123	740591.644	5793834.662
WTG124	740625.232	5794587.738
WTG125	740437.973	5795137.467
WTG126	740702.665	5796599.344
WTG127	740814.401	5799873.899
WTG128	740860.419	5793194.089
WTG129	741214.292	5800761.081
WTG130	741014.26	5799229.729
WTG131	741150.785	5794142.541

Turbine ID	Easting	Northing
WTG132	741233.882	5796295.176
WTG133	741318.043	5800150.475
WTG134	741373.488	5795737.462
WTG135	741556.001	5798768.999
WTG136	741667.742	5796989.608
WTG137	741691.634	5799662.609
WTG138	741762.664	5800627.754
WTG139	741890.413	5794055.017
WTG140	741892.05	5792921.074
WTG141	741580.067	5793465.243
WTG142	742024.001	5798974.001
WTG143	742048.186	5796288.935
WTG144	742263.43	5794777.85
WTG145	742384.333	5796987.674
WTG146	742429.999	5794137
WTG147	742530.597	5798242.148
WTG148	742537.001	5792849.5
WTG149	742552.64	5798871.803
WTG150	742751.91	5797444.499
WTG151	742716.999	5795498.999
WTG152	742977.75	5794887.371
WTG153	743030.002	5792791
WTG154	743031.552	5796203.521
WTG155	743070	5793466.999
WTG156	743161.999	5796840.999
WTG157	743091.321	5798428.205
WTG158	743343.43	5789092.963
WTG159	743373.5	5795450.41
WTG160	743386.001	5794099
WTG161	743290.417	5797844.236
WTG162	743396.937	5788549.578
WTG163	743537.669	5792731.327
WTG164	743563.248	5797329.149
WTG165	743691.021	5789487.763
WTG166	743718.449	5796078.681
WTG167	743862.646	5794698.563
WTG168	744037.785	5789005.645
WTG169	743910.014	5788436.367
WTG170	744031.43	5796683.893
WTG171	744176.826	5789613.521
WTG172	744249.002	5792764.999
WTG173	744252.001	5793335.999
WTG174	744633.569	5788942.42

Turbine ID	Easting	Northing
WTG175	744673.397	5789512.876
WTG176	744609	5796009.998
WTG177	744610.726	5793749.889
WTG178	744769.001	5792706.999
WTG179	745084.494	5789200.721
WTG180	745191	5794463
WTG181	745106.053	5796495.782
WTG182	745286.073	5793646.075
WTG183	745299.492	5792733.615
WTG184	745555.945	5795087.829
WTG185	745601.002	5795989.87
WTG186	745752.379	5796849.247
WTG187	745889.998	5795480.002
WTG188	745897.089	5794460.961
WTG189	745920.545	5792759.92
WTG190	746052.493	5793621.517
WTG191	746058.649	5796243.353
WTG192	746315.028	5796726.086
WTG193	746435.399	5793018.3
WTG194	746949.084	5794810.809
WTG195	746664.968	5793575.786
WTG196	747045.999	5795768
WTG197	747207.999	5792803
WTG198	747038.386	5794080.817
WTG199	747583.51	5794857.52
WTG200	747419.691	5793401.916
WTG201	747625.52	5794062.515
WTG202	747814.473	5792849.97
WTG203	747638.301	5795478.473
WTG204	748113.999	5794899.999
WTG205	748108.462	5794212.636
WTG206	747996.383	5793518.691
WTG207	748287.803	5793035.812
WTG208	748481.175	5795330.75
WTG209	748611.248	5794144.999
WTG210	748732.194	5794771.404
WTG211	748857	5793608.001
WTG212	749161.365	5795216.684
WTG213	749222.316	5794663.959
WTG214	749237.76	5794071.016
WTG215	750170.34	5790441.141
WTG216	750658.52	5790530.639
WTG217	750618	5791156

Golden Plains Wind Farm

Development Plan: Turbine Coordinates



Workspace: GPWF Planning DevelopmentPlan_v39118
 Layout Name: GPWF Planning DevelopmentPlan_Worksheets
 Layout Version: V39.03
 Paper Size: A3
 Scale: 25000
 Date: 2020-12-01
 Drawn By: Tim Clifton
 QGIS Version: 3.16.01
 CRS: EPSG:28354



Disclaimer
 This product has been created with the highest degree of accuracy possible. However, Golden Plains Wind Farm Management, nor any of its contractors or suppliers can be held responsible for any damages due to errors or omissions in this product. Decision of boundaries is not authoritative.

0.28 0 0.28 0.56 0.84 1.12 km



Golden Plains Wind Farm

Development Plan: Overhead Transmission Line Pole Coordinates

Structure Number	Easting	Northing
Cressy TS	741763	5790672
S1A&B	741832	5790659
S2A&B	741937	5790640
S3A&B	741988	5790909
S4A&B	741781	5791126
S5	741838	5791444
S6	741899	5791780
S7	741958	5792110
S8	742018	5792442
S9	742051	5792777
S10	742085	5793113
S11A&B	742119	5793448
S12	742419	5793567
S13	742736	5793692
S14	743051	5793816
S15	743366	5793805
S16	743587	5793797
S17A&B	743807	5793789
Eastern Collector S	743888	5793772
Eastern Collector N	743895	5793802
W1A&B	743813	5793819
W2	743619	5794059
W3	743435	5794286
W4	743216	5794556
W5	742962	5794684
W6	742669	5794831
W7	742389	5794971
W8	742121	5795105
W9	741839	5795246
W10A&B	741559	5795387
W11	741618	5795722
W12	741674	5796041
W13A&B	741732	5796370
W14	741406	5796483
W15	741079	5796597
W16	740770	5796705
W17	740444	5796818
W18	740136	5796926
W19	739913	5797132

Structure Number	Easting	Northing
W20	739685	5797233
W21	739382	5797368
W22	739042	5797519
W23	738752	5797648
W24	738451	5797782
W25	738175	5797904
W26	737914	5798021
W27	737653	5798136
W28	737433	5798263
W29	737118	5798445
W30	736870	5798686
W31	736622	5798927
W32	736373	5799170
W33	736124	5799413
W34	735897	5799633
W35	735666	5799859
W36	735444	5800074
W37	735222	5800290
W38	735001	5800506
W39	734870	5800787
W40A&B	734763	5801018
W41	734606	5801039
Central Collector	734559	5801046
N1	734625	5801168
N2	734373	5801253
N3	734087	5801350
N4	733762	5801460
N5	733449	5801566
N6	733131	5801673
N7	732818	5801779
N8	732503	5801886
N9	732195	5801990
N10	731864	5802102
N11	731532	5802214
N12	731204	5802325
N13	730899	5802428
N14	730963	5802753
N15	731026	5803077
N16	731263	5803268



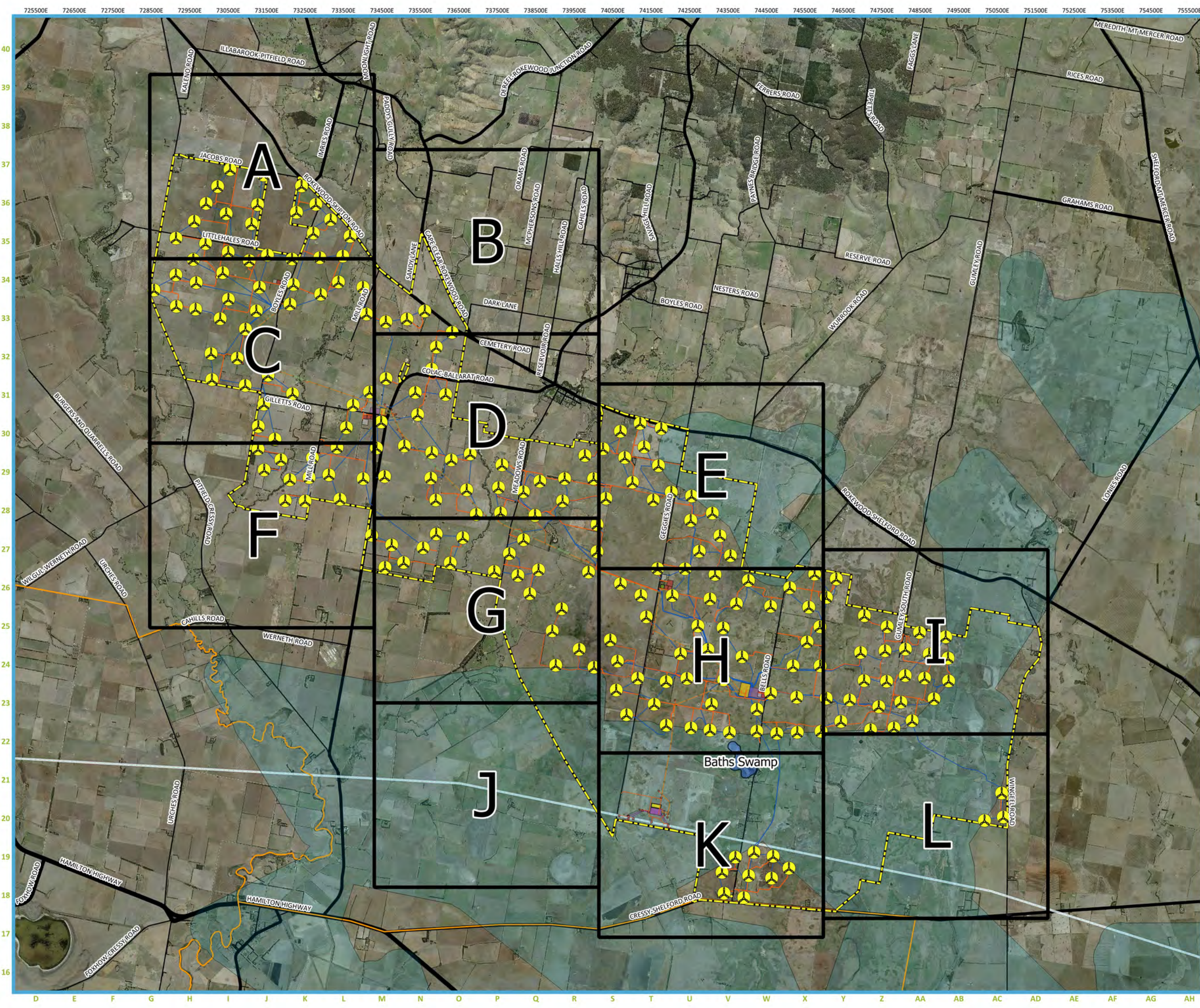
Workspace: GPWF Planning DevelopmentPlans v39 03
 Layout Name: GPWF Planning DevelopmentPlans OutlinePoleCoord
 Layout Version: V39 03
 Paper Size: A3
 Scale: 28600
 Date: 2020-12-01
 Drawn By: Tim Clifton
 QGIS Version: 3.16.01
 CRS: EPSG:28354



Disclaimer
 This product has been created with the highest degree of accuracy possible.
 However, Golden Plains Wind Farm Management, nor any of its contractors or
 suppliers can be held responsible for any damages due to errors or omissions
 in this product. Decision of boundaries is not authoritative.

0.28 0 0.28 0.56 0.84 1.12 km

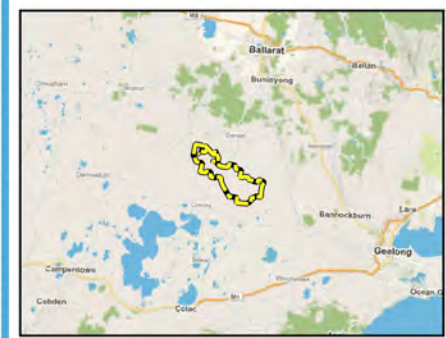




Golden Plains Wind Farm

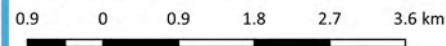
Development Plan: Overview

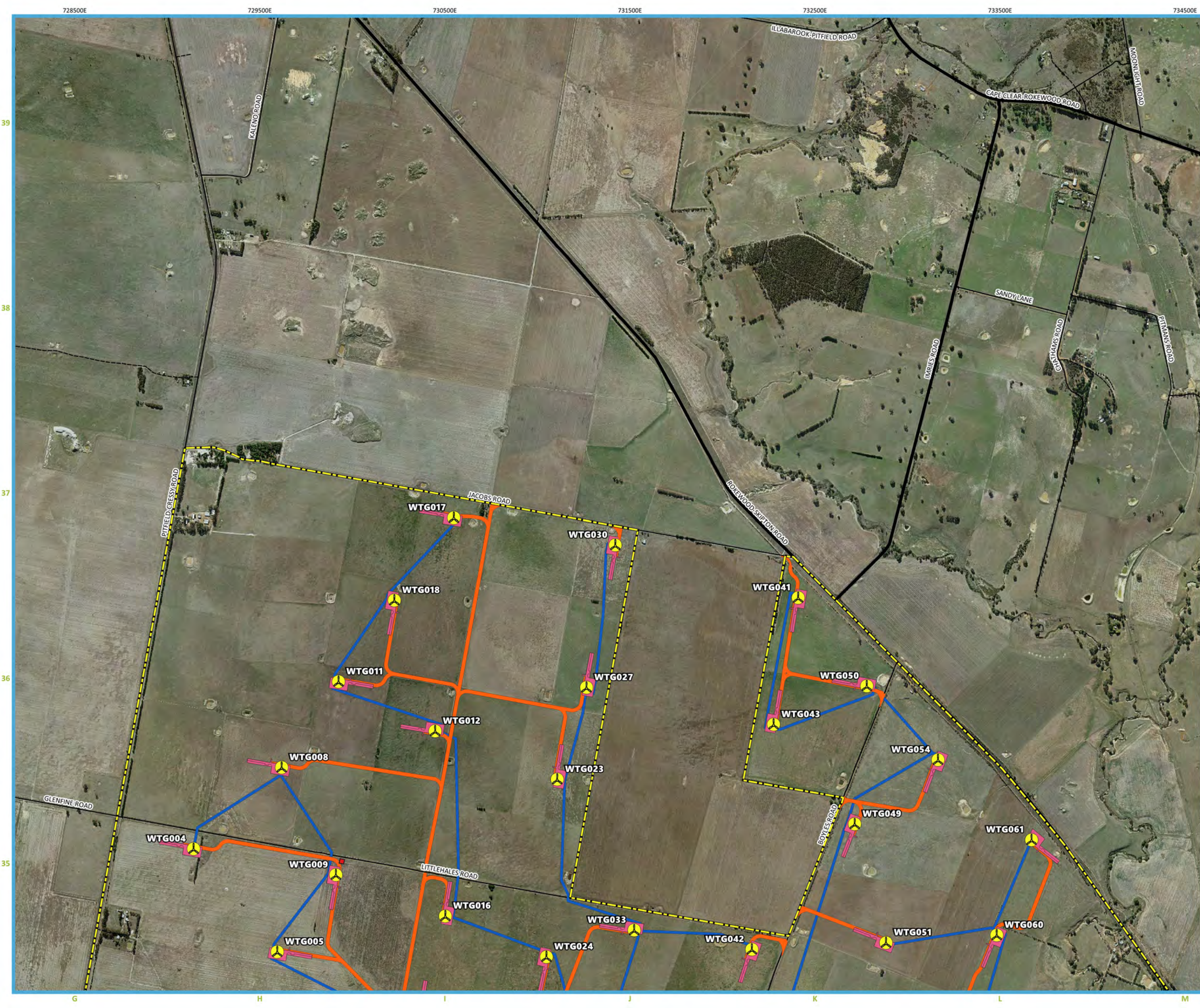
- Legend**
- Site Boundary
 - Turbine Free Broilga Buffer + 82.5m Blade
 - Bath's Swamp
 - Ausnet Transmission Group Easement 60m wide
 - Access Tracks
 - Underground Cable
 - Internal Transmission Line
 - Collector Station
 - Battery Energy Storage System
 - Concrete Batching Plant
 - Temporary Construction Area
 - Operation & Maintenance Facility
 - Intersection Upgrades
 - CFA Water Tank Hardstand
 - LGA Boundary
- Terminal Station**
- Terminal Station Boundary
 - Terminal Station Temp Construction Area
 - 500kV Cut In



Workspace: GPWF Planning DevelopmentPlans v39 03
Layout Name: GPWF Planning DevelopmentPlan Overview
Layout Version: V39 03
Paper Size: A3
Scale: 90000
Date: 2020-12-01
Drawn By: Tim Clifton
QGIS Version: 31601
CRS: EPSG:28354

Disclaimer
This product has been created with the highest degree of accuracy possible. However, Golden Plains Wind Farm Management, nor any of its contractors or suppliers can be held responsible for any damages due to errors or omissions in this product. Depiction of boundaries is not authoritative.





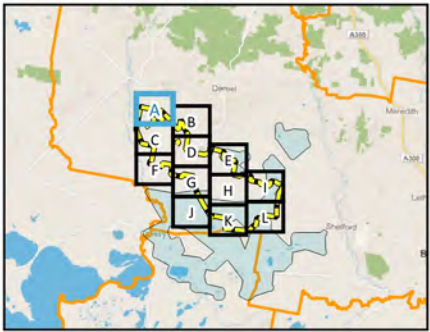
Golden Plains Wind Farm

Development Plan: Map A

Legend

- Site Boundary
- Wind Turbine Location
- Access Tracks
- Underground Cable
- WTG Hardstand
- CFA Water Tank Hardstand
- LGA Boundary

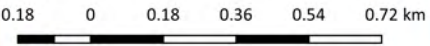
Note:
No buildings or structures on the existing Ausnet Transmission Group easement, except for access tracks, underground cables and interface works required for the connection of the wind farm electrical system to the existing 500kV Moorabool to Mortlake/Tarrone transmission line



Workspace: GPWF Planning DevelopmentPlans v39 03
Layout Name: GPWF Planning DevelopmentPlan Atlas
Layout Version: V39 03
Paper Size: A3
Scale: 18700
Date: 2020-12-02
Drawn By: Tim Clifton
QGIS Version: 31601
CRS: EPSG:28354



Disclaimer
This product has been created with the highest degree of accuracy possible. However, Golden Plains Wind Farm Management, nor any of its contractors or suppliers can be held responsible for any damages due to errors or omissions in this product. Depiction of boundaries is not authoritative.





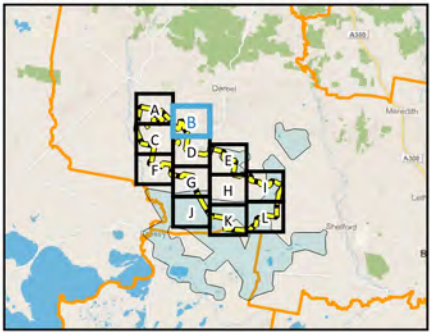
Golden Plains Wind Farm

Development Plan: Map B

Legend

- Site Boundary
- Wind Turbine Location
- Access Tracks
- Underground Cable
- WTG Hardstand
- Intersection Upgrades
- CFA Water Tank Hardstand
- LGA Boundary

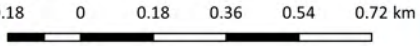
Note:
No buildings or structures on the existing Ausnet Transmission Group easement, except for access tracks, underground cables and interface works required for the connection of the wind farm electrical system to the existing 500kV Moorabool to Mortlake/Tarrone transmission line

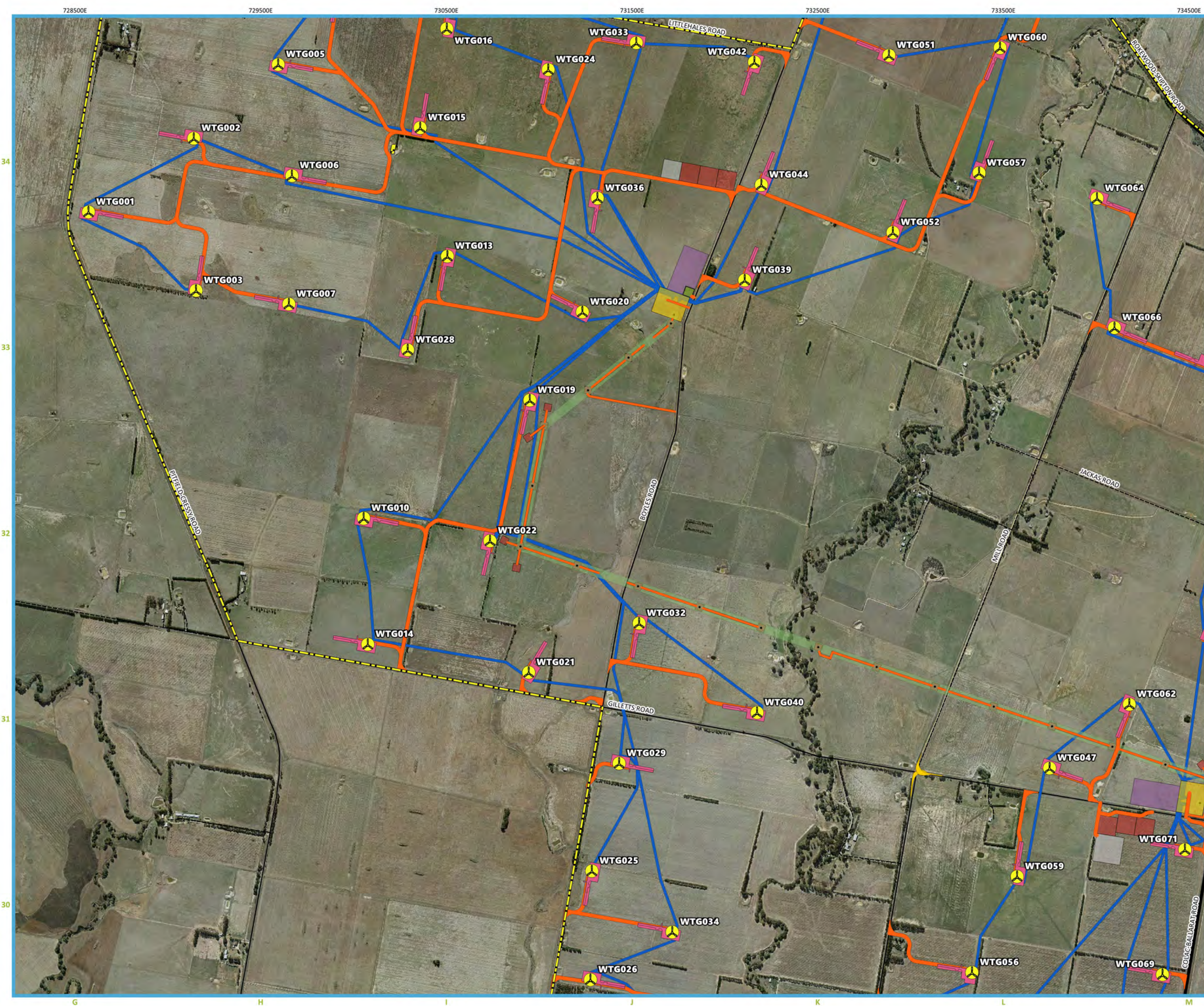


Workspace: GPWF Planning DevelopmentPlans v39 03
Layout Name: GPWF Planning DevelopmentPlan Atlas
Layout Version: V39 03
Paper Size: A3
Scale: 18700
Date: 2020 12 02
Drawn By: Tim Clifton
QGIS Version: 31601
CRS: EPSG:28354



Disclaimer
This product has been created with the highest degree of accuracy possible. However, Golden Plains Wind Farm Management, nor any of its contractors or suppliers can be held responsible for any damages due to errors or omissions in this product. Depiction of boundaries is not authoritative.



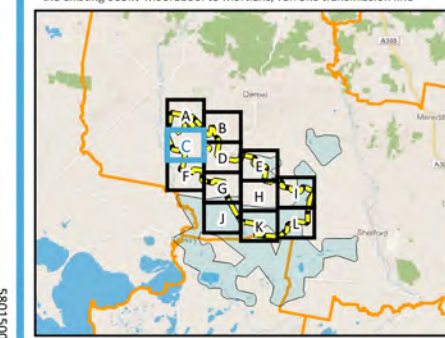


Golden Plains Wind Farm

Development Plan: Map C

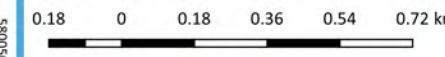
- ### Legend
- Site Boundary
 - Wind Turbine Location
 - Transmission Line Pole
 - Access Tracks
 - Underground Cable
 - Internal Transmission Line
 - WTG Hardstand
 - Collector Station
 - Battery Energy Storage System
 - Concrete Batching Plant
 - Temporary Construction Area
 - Operation & Maintenance Facility
 - Intersection Upgrades
 - LGA Boundary

Note:
No buildings or structures on the existing Ausnet Transmission Group easement, except for access tracks, underground cables and interface works required for the connection of the wind farm electrical system to the existing 500kV Moorabool to Mortlake/Tarrone transmission line



Workspace: GPWF Planning DevelopmentPlans v39 03
Layout Name: GPWF Planning DevelopmentPlan Atlas
Layout Version: V39 03
Paper Size: A3
Scale: 18700
Date: 2020 12 02
Drawn By: Tim Clifton
QGIS Version: 31601
CRS: EPSG:28354

Disclaimer
This product has been created with the highest degree of accuracy possible. However, Golden Plains Wind Farm Management, nor any of its contractors or suppliers can be held responsible for any damages due to errors or omissions in this product. Depiction of boundaries is not authoritative.



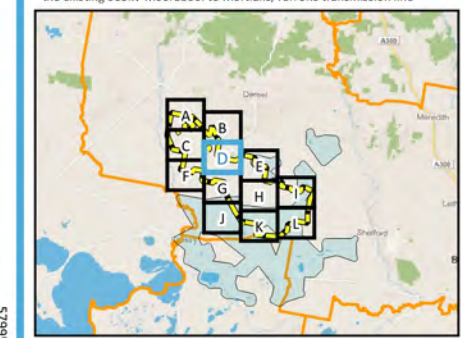


Golden Plains Wind Farm

Development Plan: Map D

- Legend**
- Site Boundary
 - Wind Turbine Location
 - Transmission Line Pole
 - Access Tracks
 - Underground Cable
 - Internal Transmission Line
 - WTG Hardstand
 - Collector Station
 - Battery Energy Storage System
 - Concrete Batching Plant
 - Temporary Construction Area
 - Intersection Upgrades
 - CFA Water Tank Hardstand
 - LGA Boundary

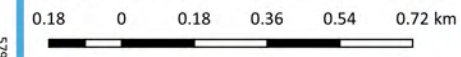
Note:
No buildings or structures on the existing Ausnet Transmission Group easement, except for access tracks, underground cables and interface works required for the connection of the wind farm electrical system to the existing 500kV Moorabool to Mortlake/Tarrone transmission line

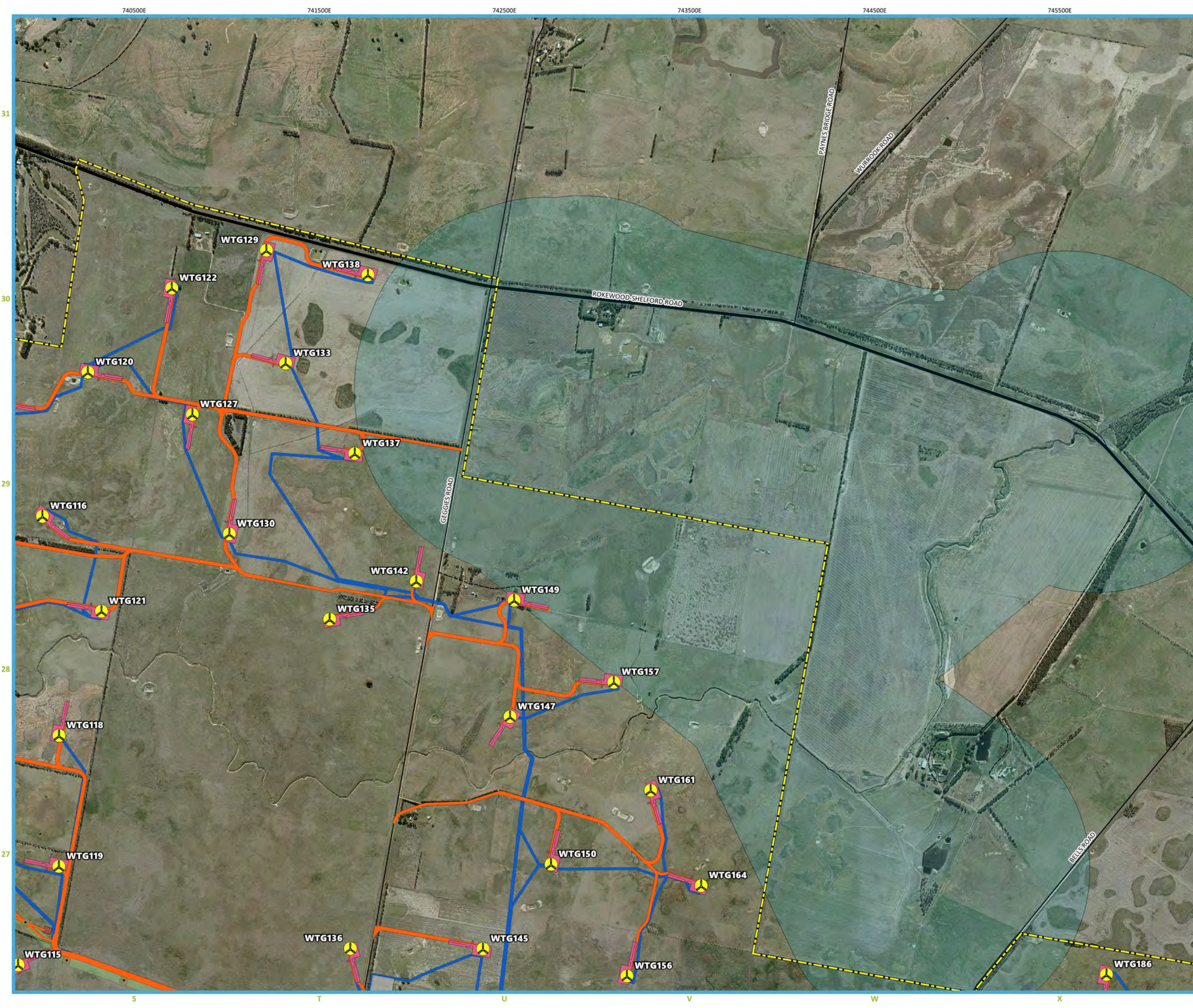


Workspace: GPWF Planning DevelopmentPlans v39 03
Layout Name: GPWF Planning DevelopmentPlan Atlas
Layout Version: V39 03
Paper Size: A3
Scale: 18700
Date: 2020 12 02
Drawn By: Tim Clifton
QGIS Version: 31601
CRS: EPSG:28354



Disclaimer
This product has been created with the highest degree of accuracy possible. However, Golden Plains Wind Farm Management, nor any of its contractors or suppliers can be held responsible for any damages due to errors or omissions in this product. Depiction of boundaries is not authoritative.



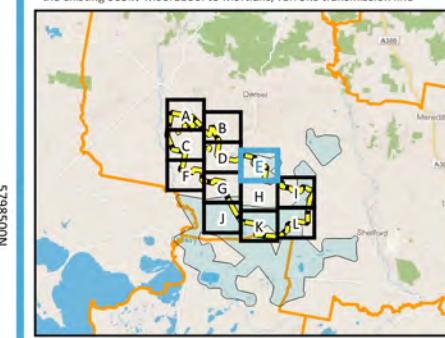


Golden Plains Wind Farm

Development Plan: Map E

- Legend**
- Site Boundary
 - Turbine Free Brolga Buffer + 82.5m Blade
 - Wind Turbine Location
 - Transmission Line Pole
 - Access Tracks
 - Underground Cable
 - Internal Transmission Line
 - WTG Hardstand
 - Concrete Batching Plant
 - Temporary Construction Area
 - LGA Boundary

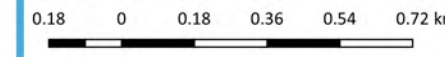
Note:
No buildings or structures on the existing Ausnet Transmission Group easement, except for access tracks, underground cables and interface works required for the connection of the wind farm electrical system to the existing 500kV Moorabool to Mortlake/Tarrone transmission line

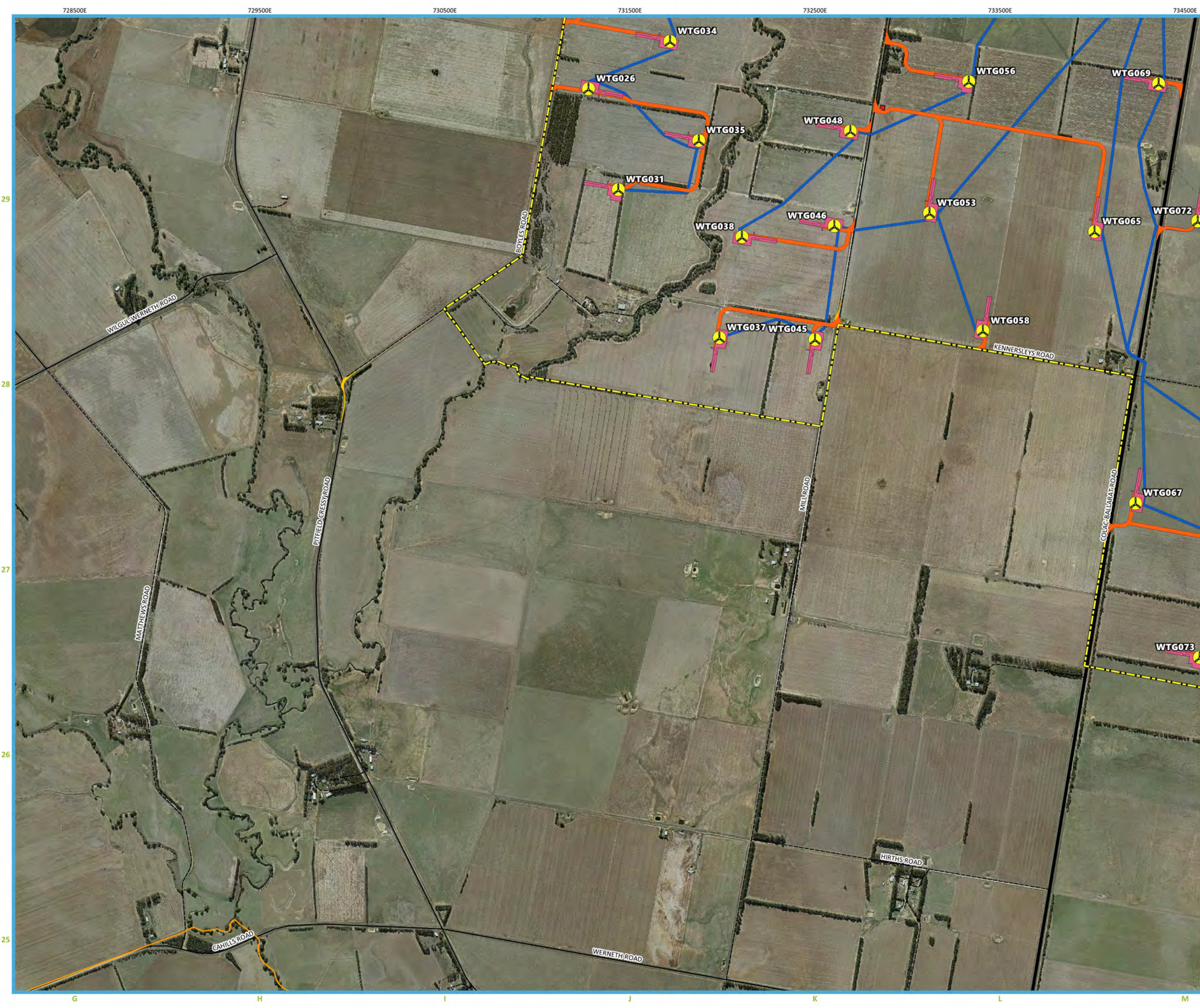


Workspace: GPWF Planning DevelopmentPlans v39 03
Layout Name: GPWF Planning DevelopmentPlan Atlas
Layout Version: V39 03
Paper Size: A3
Scale: 18700
Date: 2020-12-02
Drawn By: Tim Clifton
QGIS Version: 31601
CRS: EPSG:28354



Disclaimer
This product has been created with the highest degree of accuracy possible. However, Golden Plains Wind Farm Management, nor any of its contractors or suppliers can be held responsible for any damages due to errors or omissions in this product. Depiction of boundaries is not authoritative.





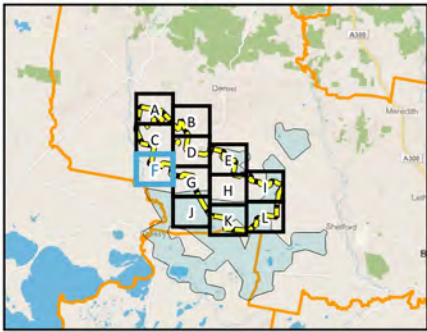
Golden Plains Wind Farm

Development Plan: Map F

Legend

- Site Boundary
- Wind Turbine Location
- Access Tracks
- Underground Cable
- WTG Hardstand
- Intersection Upgrades
- CFA Water Tank Hardstand
- LGA Boundary

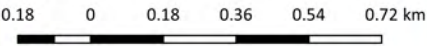
Note:
No buildings or structures on the existing Ausnet Transmission Group easement, except for access tracks, underground cables and interface works required for the connection of the wind farm electrical system to the existing 500kV Moorabool to Mortlake/Tarrone transmission line



Workspace: GPWF Planning DevelopmentPlans v39 03
Layout Name: GPWF Planning DevelopmentPlan Atlas
Layout Version: V39 03
Paper Size: A3
Scale: 18700
Date: 2020 12 02
Drawn By: Tim Clifton
QGIS Version: 31601
CRS: EPSG:28354



Disclaimer
This product has been created with the highest degree of accuracy possible. However, Golden Plains Wind Farm Management, nor any of its contractors or suppliers can be held responsible for any damages due to errors or omissions in this product. Depiction of boundaries is not authoritative.



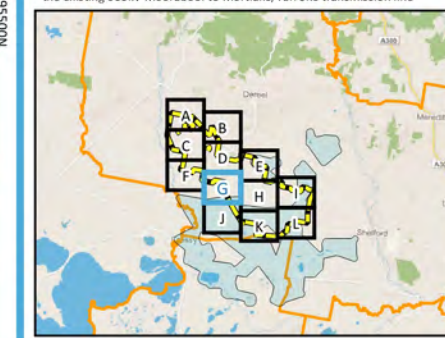


Golden Plains Wind Farm

Development Plan: Map G

- Legend**
- Site Boundary
 - Turbine Free Brolga Buffer + 82.5m Blade
 - Wind Turbine Location
 - Transmission Line Pole
 - Access Tracks
 - Underground Cable
 - Internal Transmission Line
 - WTG Hardstand
 - Temporary Construction Area
 - LGA Boundary

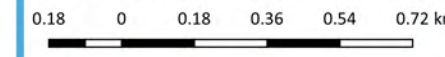
Note:
No buildings or structures on the existing Ausnet Transmission Group easement, except for access tracks, underground cables and interface works required for the connection of the wind farm electrical system to the existing 500kV Moorabool to Mortlake/Tarrone transmission line

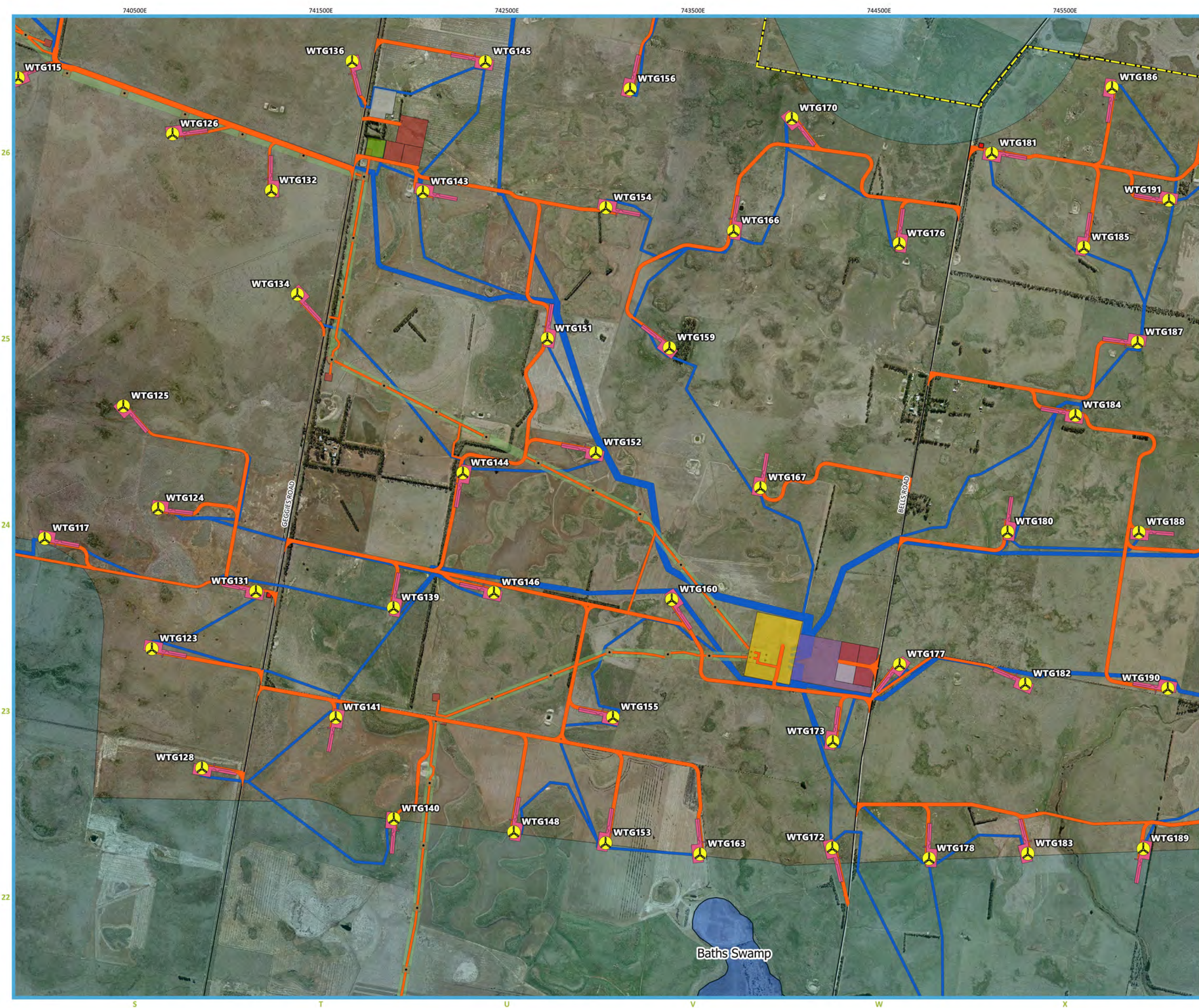


Workspace: GPWF Planning DevelopmentPlans v39 03
Layout Name: GPWF Planning DevelopmentPlan Atlas
Layout Version: V39 03
Paper Size: A3
Scale: 18700
Date: 2020 12 02
Drawn By: Tim Clifton
QGIS Version: 31601
CRS: EPSG:28354



Disclaimer
This product has been created with the highest degree of accuracy possible. However, Golden Plains Wind Farm Management, nor any of its contractors or suppliers can be held responsible for any damages due to errors or omissions in this product. Depiction of boundaries is not authoritative.



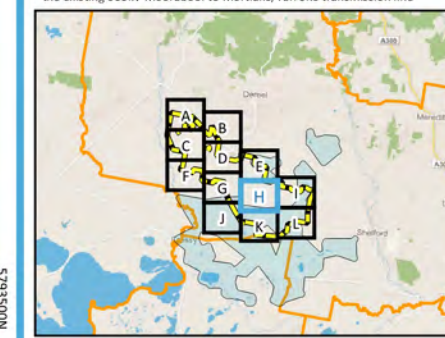


Golden Plains Wind Farm

Development Plan: Map H

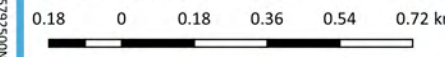
- Legend**
- Site Boundary
 - Turbine Free Broga Buffer + 82.5m Blade
 - Bath's Swamp
 - Wind Turbine Location
 - Transmission Line Pole
 - Access Tracks
 - Underground Cable
 - Internal Transmission Line
 - WTG Hardstand
 - Collector Station
 - Battery Energy Storage System
 - Concrete Batching Plant
 - Temporary Construction Area
 - Operation & Maintenance Facility
 - CFA Water Tank Hardstand
 - LGA Boundary

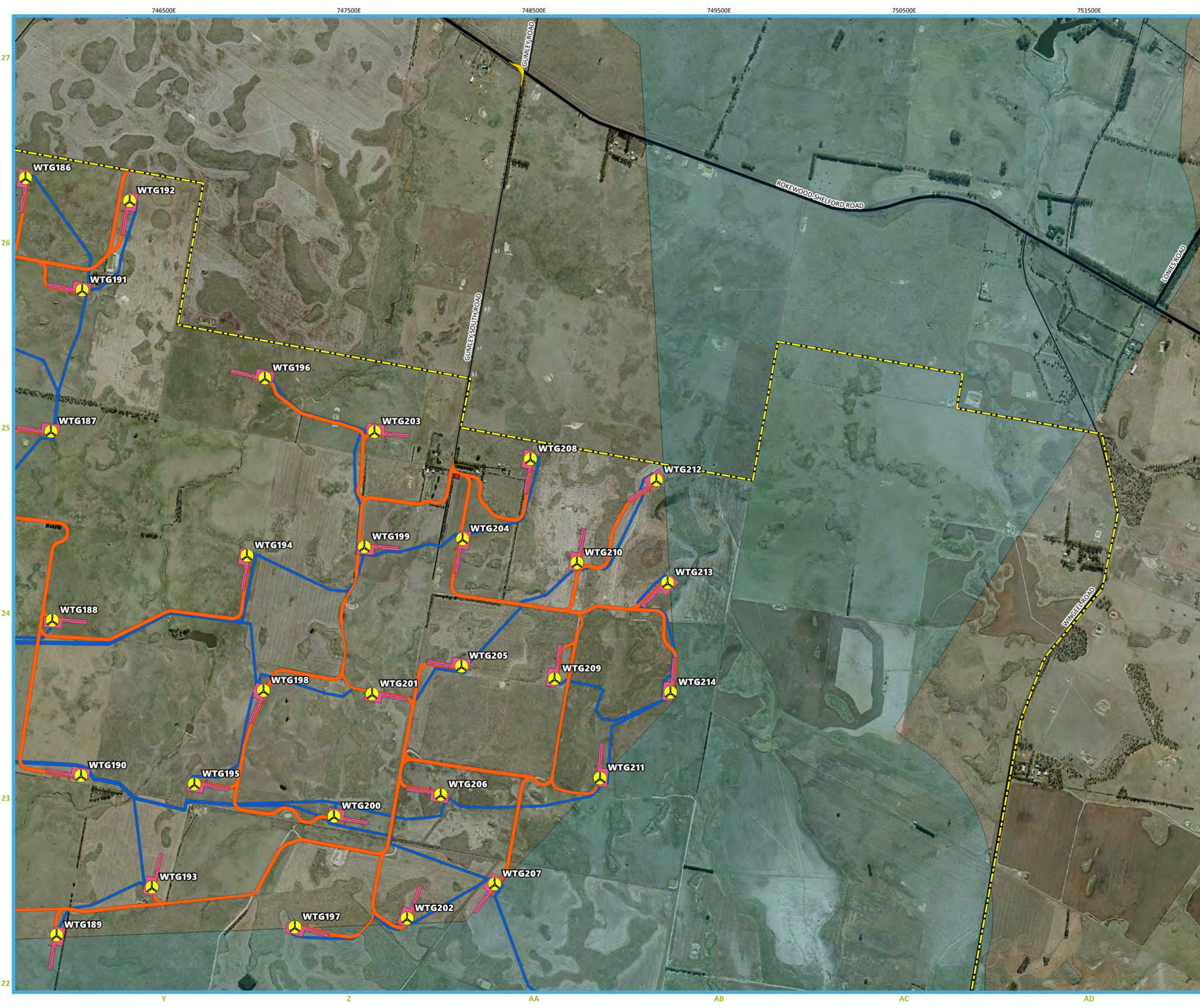
Note:
No buildings or structures on the existing Ausnet Transmission Group easement, except for access tracks, underground cables and interface works required for the connection of the wind farm electrical system to the existing 500kV Moorabool to Mortlake/Tarrone transmission line



Workspace: GPWF Planning DevelopmentPlans v39 03
Layout Name: GPWF Planning DevelopmentPlan Atlas
Layout Version: V39 03
Paper Size: A3
Scale: 18700
Date: 2020 12 02
Drawn By: Tim Clifton
QGIS Version: 31601
CRS: EPSG:28354

Disclaimer
This product has been created with the highest degree of accuracy possible. However, Golden Plains Wind Farm Management, nor any of its contractors or suppliers can be held responsible for any damages due to errors or omissions in this product. Depiction of boundaries is not authoritative.





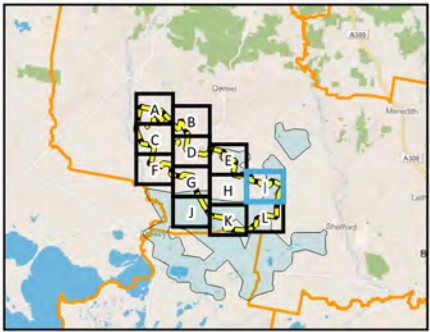
Golden Plains Wind Farm

Development Plan: Map I

Legend

- Site Boundary
- Turbine Free Brolga Buffer + 82.5m Blade
- Wind Turbine Location
- Access Tracks
- Underground Cable
- WTG Hardstand
- Intersection Upgrades
- CFA Water Tank Hardstand
- LGA Boundary

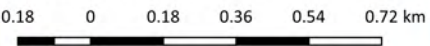
Note:
No buildings or structures on the existing Ausnet Transmission Group easement, except for access tracks, underground cables and interface works required for the connection of the wind farm electrical system to the existing 500kV Moorabool to Mortlake/Tarrone transmission line



Workspace: GPWF Planning DevelopmentPlans v39 03
Layout Name: GPWF Planning DevelopmentPlan Atlas
Layout Version: V39 03
Paper Size: A3
Scale: 18700
Date: 2020 12 02
Drawn By: Tim Clifton
QGIS Version: 31601
CRS: EPSG:28354



Disclaimer
This product has been created with the highest degree of accuracy possible. However, Golden Plains Wind Farm Management, nor any of its contractors or suppliers can be held responsible for any damages due to errors or omissions in this product. Depiction of boundaries is not authoritative.





Golden Plains Wind Farm

Development Plan: Map J

Legend

- Site Boundary
- Turbine Free Brolga Buffer + 82.5m Blade
- Ausnet Transmission Group Easement 60m wide
- LGA Boundary

Note:
No buildings or structures on the existing Ausnet Transmission Group easement, except for access tracks, underground cables and interface works required for the connection of the wind farm electrical system to the existing 500kV Moorabool to Mortlake/Tarrone transmission line

Workspace: GPWF Planning DevelopmentPlans v39 03
Layout Name: GPWF Planning DevelopmentPlan Atlas
Layout Version: V39 03
Paper Size: A3
Scale: 18700
Date: 2020-12-02
Drawn By: Tim Clifton
QGIS Version: 31601
CRS: EPSG:28354

Disclaimer
This product has been created with the highest degree of accuracy possible. However, Golden Plains Wind Farm Management, nor any of its contractors or suppliers can be held responsible for any damages due to errors or omissions in this product. Depiction of boundaries is not authoritative.

0.18

0

0.18

0.36

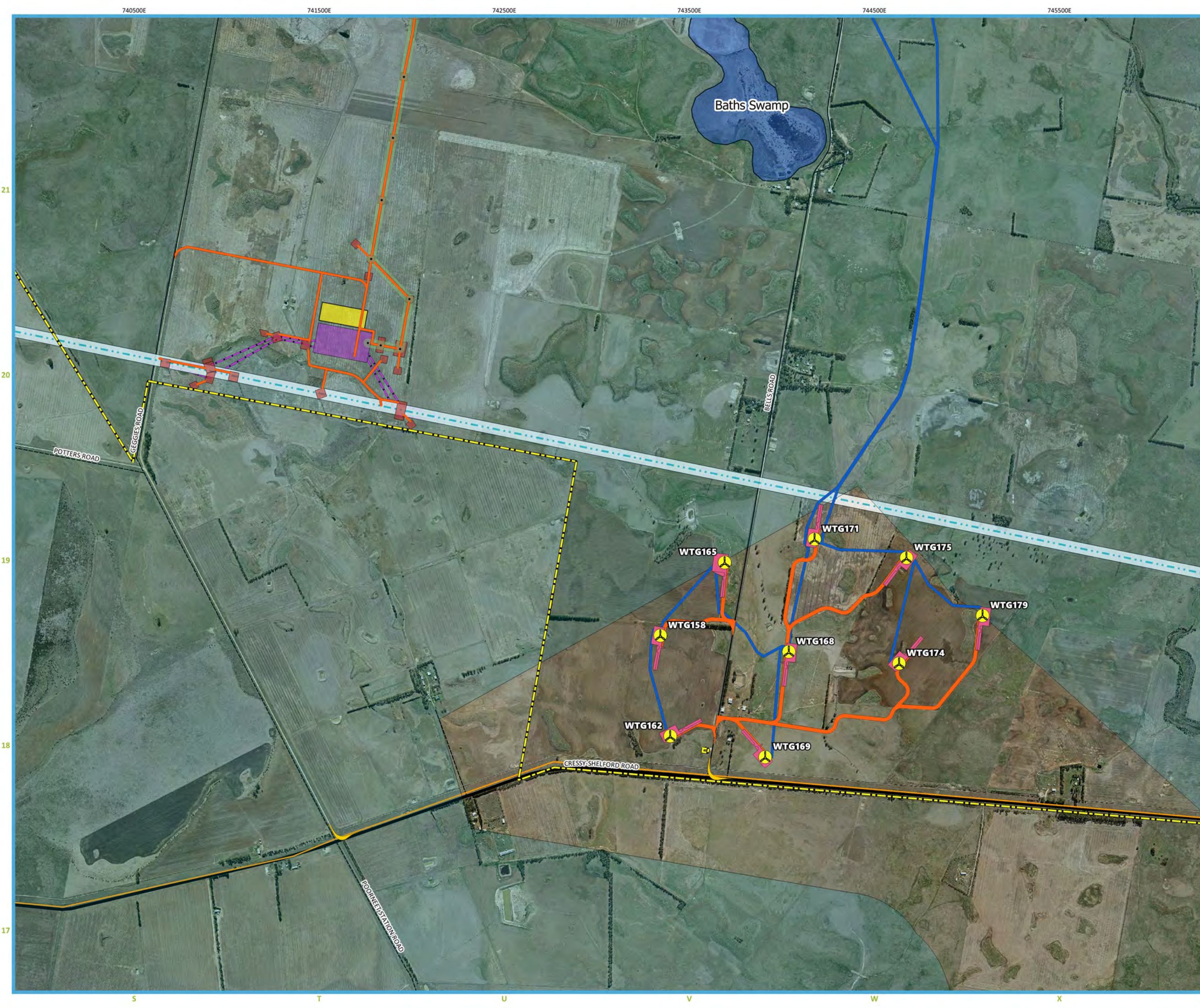
0.54

0.72 km

GoldenPlains

WINDFARM

©Golden Plains Wind Farm Management Pty. Ltd. 2019



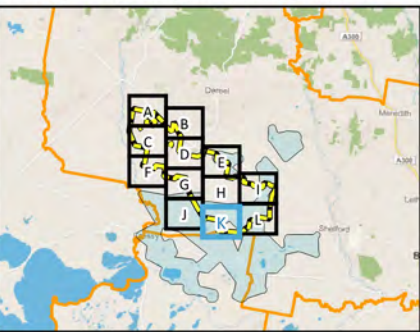
Golden Plains Wind Farm

Development Plan: Map K

Legend

- Site Boundary
- Turbine Free Broga Buffer + 82.5m Blade
- Bath's Swamp
- Ausnet Transmission Group Easement 60m wide
- Wind Turbine Location
- Transmission Line Pole
- Access Tracks
- Underground Cable
- Internal Transmission Line
- WTG Hardstand
- Temporary Construction Area
- Intersection Upgrades
- CFA Water Tank Hardstand
- LGA Boundary
- Terminal Station
- Terminal Station Boundary
- Terminal Station Temporary Construction Area
- 500kV Cut In

Note:
No buildings or structures on the existing Ausnet Transmission Group easement, except for access tracks, underground cables and interface works required for the connection of the wind farm electrical system to the existing 500kV Moorabool to Mortlake/Tarrone transmission line



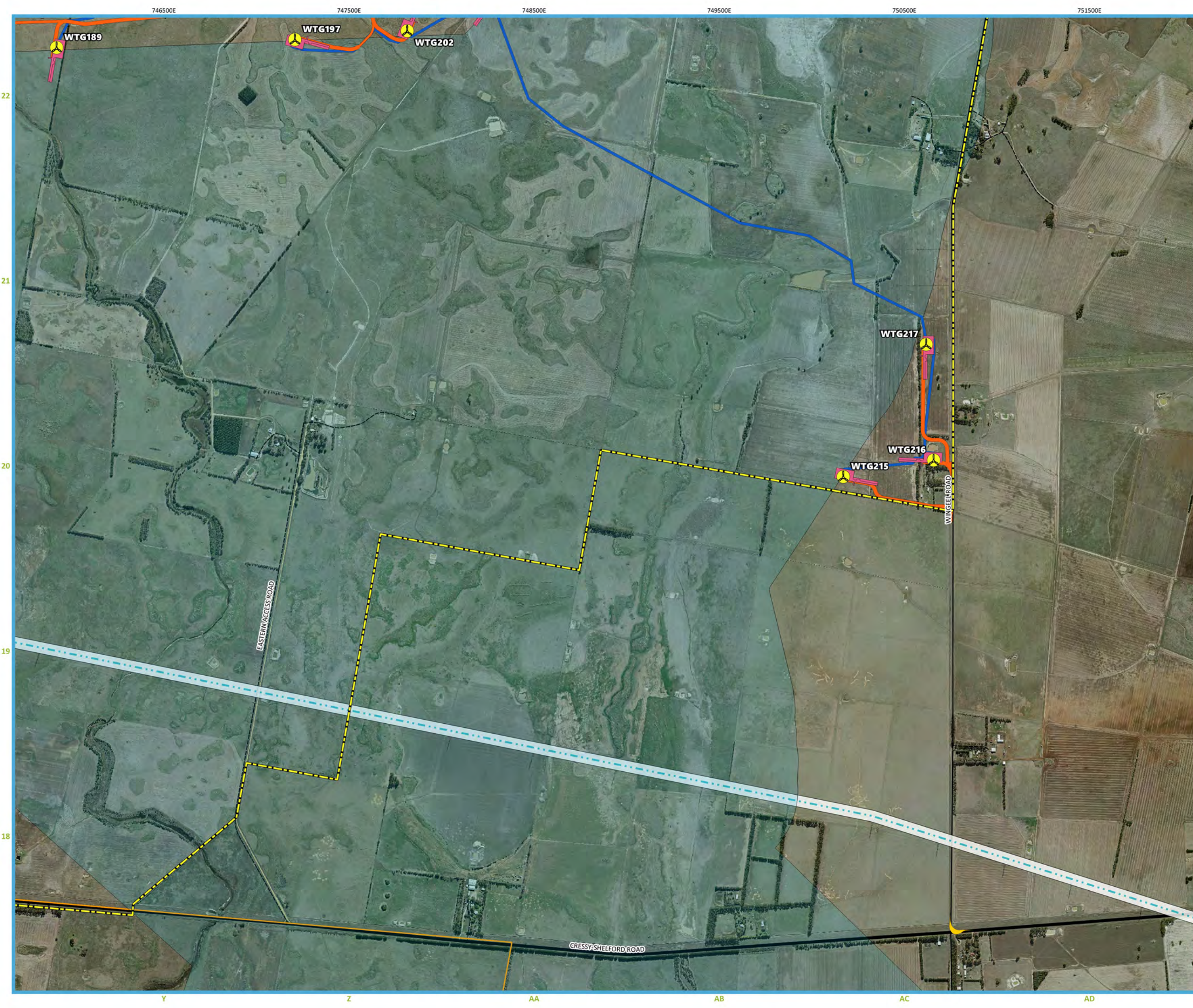
Workspace: GPWF Planning DevelopmentPlans v39 03
Layout Name: GPWF Planning DevelopmentPlan Atlas
Layout Version: V39 03
Paper Size: A3
Scale: 18700
Date: 2020-12-02
Drawn By: Tim Clifton
QGIS Version: 31601
CRS: EPSG:28354



Disclaimer
This product has been created with the highest degree of accuracy possible. However, Golden Plains Wind Farm Management, nor any of its contractors or suppliers can be held responsible for any damages due to errors or omissions in this product. Depiction of boundaries is not authoritative.

0.18 0 0.18 0.36 0.54 0.72 km



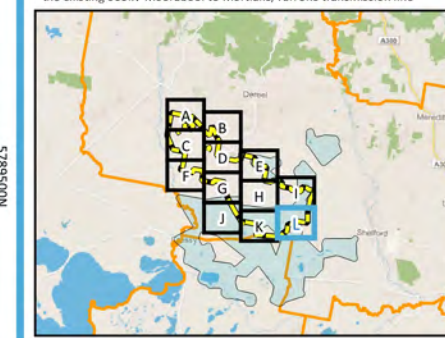


Golden Plains Wind Farm

Development Plan: Map L

- Legend**
- Site Boundary
 - Turbine Free Brolga Buffer + 82.5m Blade
 - Ausnet Transmission Group Easement 60m wide
 - Wind Turbine Location
 - Access Tracks
 - Underground Cable
 - WTG Hardstand
 - Intersection Upgrades
 - CFA Water Tank Hardstand
 - LGA Boundary

Note:
No buildings or structures on the existing Ausnet Transmission Group easement, except for access tracks, underground cables and interface works required for the connection of the wind farm electrical system to the existing 500kV Moorabool to Mortlake/Tarrone transmission line



Workspace: GPWF Planning DevelopmentPlans v39 03
Layout Name: GPWF Planning DevelopmentPlan Atlas
Layout Version: V39 03
Paper Size: A3
Scale: 18700
Date: 2020-12-02
Drawn By: Tim Clifton
QGIS Version: 31601
CRS: EPSG:28354

Disclaimer
This product has been created with the highest degree of accuracy possible. However, Golden Plains Wind Farm Management, nor any of its contractors or suppliers can be held responsible for any damages due to errors or omissions in this product. Depiction of boundaries is not authoritative.

