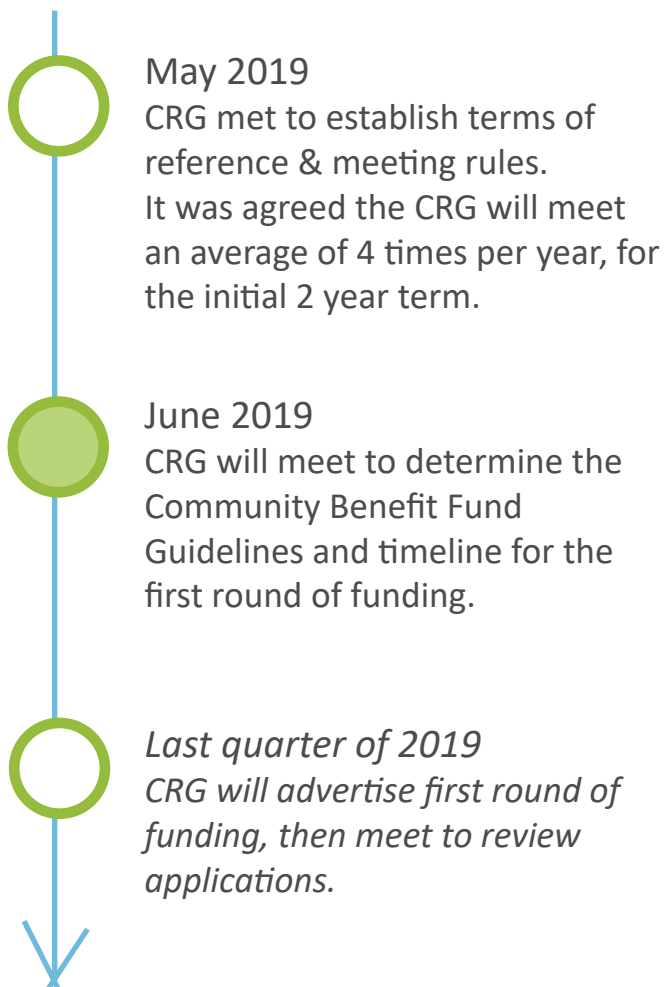




# GOLDEN PLAINS WIND FARM

## COMMUNITY REFERENCE GROUP

### TIMELINE FOR THE CRG:



### PURPOSE OF THE CRG:



Enhance communication between the Golden Plains Wind Farm and the local community.



Capture community feedback & share project information.



Foster positive relationships & encourage community partnerships.



Provide an open forum for discussion of any questions or concerns.



Provide recommendations on the allocation of the community benefit fund.

### WHAT IS THE CRG?

The Golden Plains Wind Farm Community Reference Group (CRG) is a group of 8 community members. The CRG is an advisory body for the Golden Plains Wind Farm in the allocation of the Community Benefit Fund and help to ensure the community benefits from the development.

### WHAT WAS THE SELECTION PROCESS?

WestWind Energy advertised for CRG nominations in late 2018 and early 2019. A selection committee, comprised of representatives from Golden Plains Shire and WestWind Energy, along with an independent engagement specialist, reviewed applications. Selection criteria was based on achieving a representative group from a range of community groups, geographic locations, gender and age. The group has a 2 year term, when nominations will be re-advertised.

# KNOW YOUR CRG

Sophie Whitlock



Rokewood Kinder Committee  
Rokewood Primary School Council  
Rokewood Corindhap Community  
Planning Group  
Auskick Coordinator

*"With a long family history in the Rokewood area, I'm passionate about watching the town grow and evolve. I strongly value community engagement and am keen to ensure that all community members benefit from updated facilities and increased opportunities in the town."*

Margaret Bufton



Rokewood (Hesse) Walking Group,  
Barunah Park Recreation Reserve,  
Golden Plains Rural Womens Network,  
Cressy History Group,  
Australian Red Cross Member

*"I welcome the chance to have input to the Community Reference Group of the Golden Plains Wind Farm. It will be the ideal forum to discuss what the community and other local groups are proposing as projects to enhance and develop our area."*

Wayne Terry



Corindhap Recreation  
Corindhap Hall  
Rokewood Recreation  
Rokewood Hall  
Rokewood Lagoon  
Rokewood CFA

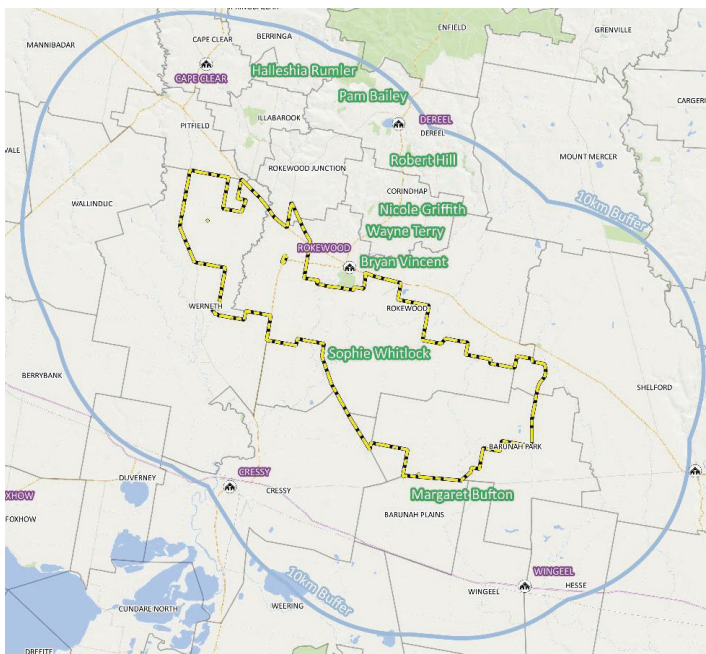
*"Hoping to build a stronger community"*



Bryan Vincent

Leading Senior Constable 31835 |  
Station Commander - Rokewood Police Station

*"I believe the CRG has the ability to provide great benefits to the local communities and want to be able to offer an impartial voice to the applications put forward"*



Pamela Bailey



Committee member of Dereel Community Hub Inc.  
Member of Dereel Community Planning Group  
Community representative, Geelong Heritage Centre Advisory  
Committee (Reporting to Geelong Regional Library Corporation)

*"I believe anyone with the time and inclination should try to make a positive impact on their surroundings in whichever way they can."*

Nicole Griffith

Rokewood Recreation Reserves Committee  
Rokewood Community Coordinators



*"Its Important to me to be on this committee because I want to see our towns grow and strive so my kids have something to look forward to and to grow up with."*

Robert Hill



Dereel Fire Brigade Captain  
Leigh Group Delegate (Country Fire Authority)  
(Leigh Group consists of: Barunah Plains Nth,  
Dereel, Mount Mercer, Rokewood, Shelford,  
Teesdale, Werneth)

*"I joined the CRG in the hope I might help build a stronger long term foundation for the community whilst facilitating growth in local facilities, groups and events."*

Halleshia Rumler

Golden Plains Rural Women's Network

*"Being apart of the CRG means I am able to give back to the community and help direct the growth and future of our town"*

